

LENNOX®
LF25 UNIT HEATERS



DESIGNED FOR EXCEPTIONAL PERFORMANCE



UNIT HEATERS AT A GLANCE:

Designed for easy installation in a wide range of commercial and residential applications

Unit Heaters – Up to 85% thermal efficiency

Commercial heating capacities from 30,000 – 400,000 BTU/h

Residential heating capacities from 30,000 – 105,000 BTU/h

Easy access to components through a hinged door

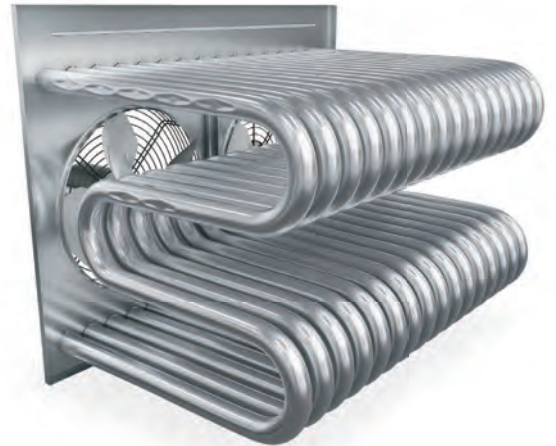
Stocked and available for quick delivery or pick up at a Lennox Store near you

ENGINEERED FOR MAXIMUM EFFICIENCY

Lennox heating products are designed for increased reliability and peak performance, year after year. Advanced engineering and high-quality components produce a durable product that delivers comfort with maximum efficiency.

PATENTED HEAT EXCHANGER

A standard feature of all Lennox unit heaters is the tubular heat exchanger, designed to enhance performance and reliability. The patented dimpled tubular design maximizes efficiency and provides excellent heat transfer by completely exposing the heating surface to the air stream. This tubular construction minimizes air resistance to allow for even heating across all surfaces, which, when combined with a lower firing rate, reduces stress on the heat exchanger.



ENHANCED FEATURES

Commercial unit heater models are available in stainless steel. All unit heater models offer standard features such as the ignitor, flame sensor, high limit switch, and 100% error proof wiring harness. Hinged access doors allow easy access to the DSI control board with 11 error codes and each unit heater is remote LED fault detection diagnostics enabled. Additional advanced features include in-shot cluster burner assembly that's simple to clean and easy to reach.



EASY INSTALLATION

The simple-to-install unit heater begins with factory testing to ensure easy and quick project completion. Each unit is factory wired and tested with complete cycles of startup and shutdown before being shipped. Gas and electrical operation verification leads to a quick and easy start up on the job site. The low-profile, dual-purpose, commercial and residential application LF25-30 thru LF25-105, features 180 degree installation position capability. The commercial LF25-125 thru LF25-400 units feature cage-nuts for all-thread installation, and all unit heaters feature easily located connections for gas, and removable terminal block for both line voltage and thermostats.



MORE FLEXIBILITY KEEPS EVERYONE COMFORTABLE

Lennox heating products are available in three unit designs to meet a wide range of commercial and residential applications.

With fourteen available models, it's easy to find the right size heater to keep your spaces comfortable. Horizontal and vertical wall venting options, as well as the 180° installation* capability, allow the units to be placed in a number of locations.



UNIT HEATERS

- Ideal for a wide range of commercial and residential applications
- Heating capacities from 30,000–400,000 BTU/h
- Up to 85% thermal efficiency
- Stainless steel heat exchanger available on 125,000 - 400,000 BTU/h
- Sidewall venting eliminates roof penetrations
- Self-diagnostic board with LED display improves troubleshooting efficiency and accuracy

* Only compact models can be installed 180°

LENNOX LF25 UNIT HEATER SPECIFICATIONS

LF25 Compact Unit Heaters

MODEL*	GAS HEATING PERFORMANCE						CONNECTIONS		
	INPUT HEATING CAPACITY BTU/h	OUTPUT HEATING CAPACITY BTU/h	LP/PROPANE OUTPUT HEATING CAPACITY BTU/h	STEADY STATE EFFICIENCY		TEMP. RISE °F [°C]	VERT. FLUE SIZE IN [MM]	HORZ. FLUE SIZE IN [MM]	GAS PIPING SIZE INCHES
				NATURAL	PROPANE				
LF25-030	30,000	24,900	25,500	83.4%	85.2%	37	4	4	1/2
	8.8	7.3	7.5			2.8	102	102	
LF25-045	45,000	37,350	38,250	83.7%	85.3%	52	4	4	1/2
	13.2	11.0	11.2			11.1	102	102	
LF25-060	60,000	49,800	51,000	83.7%	85.3%	47	4	4	1/2
	17.6	14.6	15.0			8.3	102	102	
LF25-075	75,000	62,250	63,750	83.4%	85.1%	65	4	4	1/2
	22.0	18.3	18.7			18.3	102	102	
LF25-090	90,000	74,700	75,600	83.8%	85.7%	43	4	4	1/2
	26.4	21.9	22.2			6.1	102	102	
LF25-105	105,000	87,150	88,200	83.5%	85.0%	59	4	4	1/2
	30.8	25.6	25.9			15.0	102	102	

LF25 Commercial Unit Heaters

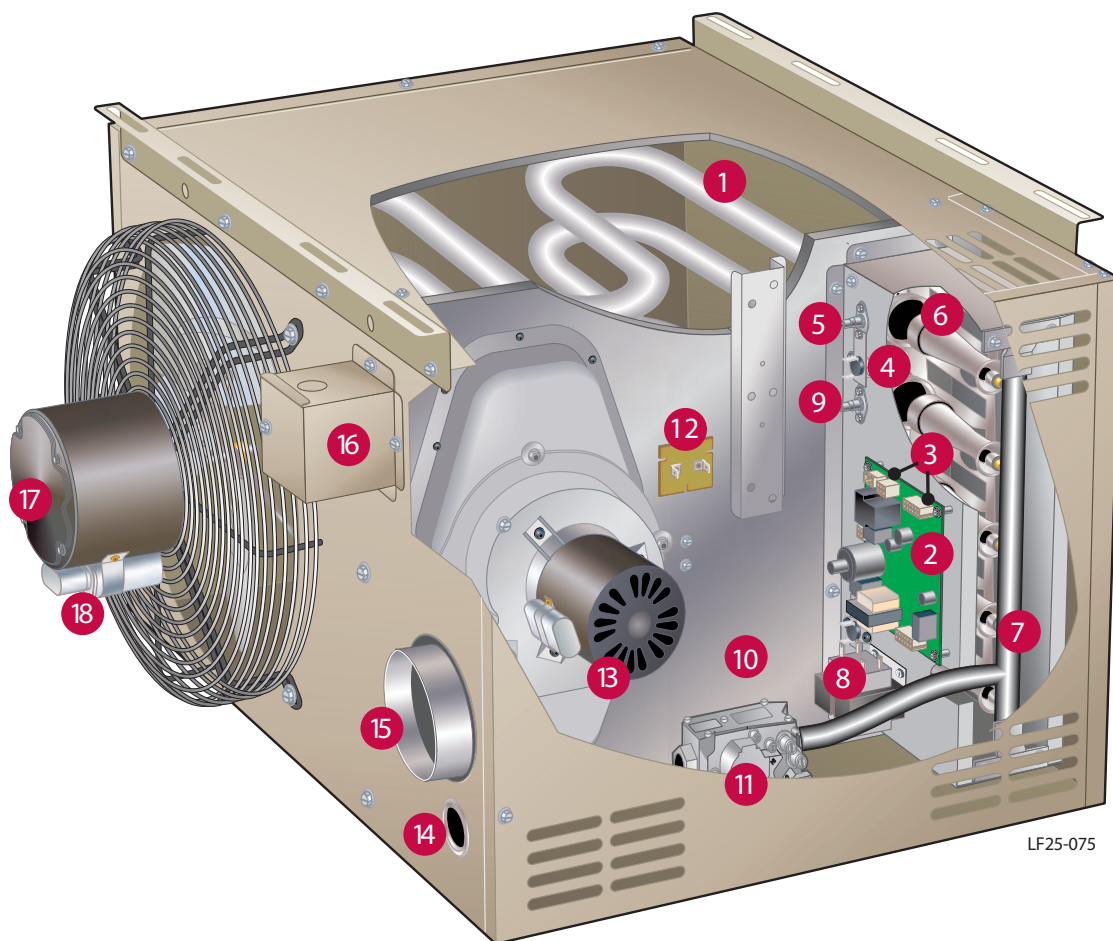
MODEL*	GAS HEATING PERFORMANCE						CONNECTIONS		
	INPUT HEATING CAPACITY BTU/h	OUTPUT HEATING CAPACITY BTU/h	LP/PROPANE OUTPUT HEATING CAPACITY BTU/h	STEADY STATE EFFICIENCY		TEMP. RISE °F [°C]	VERT. FLUE SIZE IN [MM]	HORZ. FLUE SIZE IN [MM]	GAS PIPING SIZE INCHES
				NATURAL	PROPANE				
LF25-125	125,000	103,750	105,000	83%	85%	50	4	4	1/2
	36.6	30.4	30.7			10	102	102	
LF25-150	150,000	124,500	126,000	83%	85%	62	4	4	1/2
	44.0	36.5	37.0			16.7	102	102	
LF25-175	175,000	145,250	147,000	83%	85%	58	5	5	1/2
	51.3	42.6	43.1			14.4	127	127	
LF25-200	200,000	166,000	168,000	83%	85%	59	5	5	1/2
	58.6	48.6	49.2			15.0	127	127	
LF25-250	250,000	207,500	210,000	83%	85%	59	5	5	3/4
	73.3	60.8	61.6			15.0	127	127	
LF25-300	300,000	249,000	252,000	82%	84%	57	5	5	3/4
	87.9	73.0	73.8			13.9	127	127	
LF25-350	350,000	290,500	294,000	83%	84%	58	6	6	3/4
	102.6	85.2	86.2			14.4	152	152	
LF25-400	400,000	332,000	336,000	82%	84%	65	6	6	3/4
	117.2	97.3	98.4			18.3	152	152	

FAN DATA									PHYSICAL DATA			
NO. OF FANS	FAN DIAMETER	NO. OF BLADES	FAN PITCH	MOTOR OUTPUT HP [W]	FULL LOAD MOTOR AMPS	RPM	CFM [M3/MIN.]	THROW FT. [M]	DIMENSIONS L X W X H INCHES [MM]	UNIT WEIGHT LBS. [KG]	SHIP WEIGHT LBS. [KG]	MOUNTING HEIGHT RANGES FT. [M]
1	10"	4	37°	1/25	0.45	1550	625	27	27.5 x 29 x 12.375	55	60	5-12
							17.7	9.3	698.5 x 736.6 x 314.3	24.9	27.2	1.5-3.0
1	10"	4	37°	1/25	0.45	1550	665	29	27.5 x 29 x 12.375	60	65	5-12
							18.8	10.0	698.5 x 736.6 x 314.3	27.2	29.5	1.5-3.0
1	14"	4	34°	1/15	0.9	1075	1000	34	27.25 x 29 x 17.5	85	90	5-14
							28.3	11.8	692.2 x 736.6 x 445	38.6	40.8	1.5-4.3
1	14"	4	34°	1/15	0.9	1075	1200	41	27.25 x 29 x 17.5	90	95	5-14
							34.0	14.2	692.2 x 736.6 x 445	40.8	43.0	1.5-4.3
1	16"	4	28°	1/10	1.5	1075	1600	46	28.875 x 29 x 23	115	120	5-16
							45.3	16.1	733.4 x 736.6 x 584	52.2	54.4	1.5-4.9
1	16"	4	28°	1/10	1.5	1075	1500	43	28.875 x 29 x 23	120	125	5-16
							42.5	15.1	733.4 x 736.6 x 584	54.4	56.7	1.5-4.9

FAN DATA									PHYSICAL DATA			
NO. OF FANS	FAN DIAMETER	NO. OF BLADES	FAN PITCH	MOTOR OUTPUT HP [W]	FULL LOAD MOTOR AMPS	RPM	CFM [M3/MIN.]	THROW FT. [M]	DIMENSIONS L X W X H INCHES [MM]	UNIT WEIGHT LBS. [KG]	SHIP WEIGHT LBS. [KG]	MOUNTING HEIGHT RANGES FT. [M]
1	16"	4	36°	1/5	3.0	1075	1950	49	42.5 x 24 x 35.25	147	167	8-16
							55.2	17.1	1079.5 x 609.6 x 895.4	66.7	75.8	2.4-4.9
1	16"	4	36°	1/5	3.0	1075	1950	49	42.5 x 24 x 35.25	157	177	8-16
							55.2	17.1	1079.5 x 609.6 x 895.4	71.2	80.3	2.4-4.9
1	18"	5	35°	1/3	4.4	1075	2350	52	42.5 x 29.5 x 35.25	170	190	8-22
							66.5	18.0	1079.5 x 749.3 x 895.4	77.1	86.2	2.4-6.7
1	18"	5	35°	1/3	4.4	1075	2650	59	42.5 x 29.5 x 35.25	180	200	8-22
							75.0	20.4	1079.5 x 749.3 x 895.4	81.6	90.7	2.4-6.7
2	16"	4	36°	1/5	3.0	1075	3400	60	42.5 x 41.125 x 35.25	290	310	12-28
							96.3	21.0	1079.5 x 1044.6 x 895.4	131.5	140.6	3.7-8.5
2	16"	4	36°	1/5	3.0	1075	4000	71	42.5 x 41.125 x 35.25	310	330	12-28
							113.3	24.8	1079.5 x 1044.6 x 895.4	140.6	149.7	3.7-8.5
2	18"	5	35°	1/3	4.4	1075	4500	70	42.5 x 51.5 x 35.25	340	360	12-28
							127.4	21.3	1079.5 x 1308.1 x 895.4	154.2	163.3	3.7-8.5
2	18"	5	35°	1/3	4.4	1075	4750	78	42.5 x 51.5 x 35.25	360	380	12-28
							134.5	23.8	1079.5 x 1308.1 x 895.4	163.3	172.4	3.7-8.5



IMPROVED PERFORMANCE, INSTALLATION, AND SERVICEABILITY



LF25-075

- | | |
|---|---|
| 1 Dimpled Tubular Heat Exchanger improves efficiency and increase durability | 9 Direct Spark Igniter improves operation and efficiency |
| 2 DSI Control Board offers the most diagnostic codes to speed up installation and diagnostics | 10 Pressure Switch verifies flue pipe is clear for safe operation (not shown) |
| 3 Removable Thermostat and Power Connections for speed of installation | 11 24V Gas Valve with 100% safety shut off |
| 4 Flame Rollout Switches improves safety | 12 Primary Limit Switch improves safety |
| 5 Flame Sensor improves safety | 13 Combustion Air Inducer removes carbon |
| 6 Burner Cluster | 14 Gas Inlet |
| 7 Gas Manifold | 15 Flue Outlet |
| 8 24V Transformer | 16 Field Power Connection for quick install |
| | 17 Fan Motor |
| | 18 Capacitor |

SOLUTIONS FOR CUSTOMIZED COMFORT

Don't just choose a Lennox product—choose a Lennox® Commercial Comfort System.

These complete packages of HVAC solutions provide tools to create a healthy and comfortable environment.



PACKAGED UNITS

- Energence® Rooftop Units
- Strategos® Rooftop Units
- Landmark® Rooftop Units
- Raider® Rooftop Units
- Accessories



COMMERCIAL CONTROLS

- iCON Intelligence Connected™ Building Automation System
- Systems Integration Solutions
- Commercial Thermostats



VRF

- Outdoor Units
- Indoor Units
- Controls
- Accessories



MINI-SPLIT SYSTEMS

- Heat Pump Mini-Splits
- Low Ambient Heat Pump Mini-Splits
- Indoor Units
- Controls



HEATING

- Unit Heaters
- Duct Furnaces
- Furnaces



INDOOR AIR QUALITY

- Dedicated Outdoor Air System™
- Humiditrol® Dehumidification System
- Demand Control Ventilation
- Air Filters
- UVC Lamps



SPLIT SYSTEMS

- Elite® Series Large Split Systems
- S-Class® Air Conditioners/Heat Pumps
- T-Class™ Air Conditioners/Heat Pumps
- Air Handlers
- Indoor Coils



© 2019 Lennox Industries Inc.

For a complete list of the registered and common law trademarks owned by Lennox Industries Inc., please visit www.lennoxcommercial.com.

27P05 9/19 PC92169